

MONTGOMERY CEO



Annual Report 2015-2016

2015-2016 Montgomery CEO Annual Report

Cheers from the Chairman,

“Build it and they will come.”

Well, it worked in the movie “Field of Dreams,” and it worked in Effingham County, Illinois, so why not try it here? So we did. And about 18 months later, we have much to celebrate!

Causes for celebration:

Teamwork by county board members Jay Martin, David Ronen, Tim Hopper, Evan Young, Megan Beeler, Nikki Bishop, Ron Deabenderfer, and Roy Hertel with whom I had the pleasure of serving on the Economic Development Committee. The Committee initiated the conversations with school boards and worked with our peers on the county board to pay the franchise fee to Midland Institute using coal royalty dollars. Several committee members also helped recruit some of our earliest Investors.

Vision by the administrators and school board members who saw potential in the program to enrich the academic experience for some and to provide the right kind of creative, hands-on outlet for others.

Commitment by our first investor Marty Dawson of Stiehl-Dawson Funeral Homes when he said, “Count me in!” And our 49 Investors who have signed on because they believe in the power of people to transform communities through their business products and civic service. Investors, you are truly amazing. The speaking, tours, mentoring and direct support of the class business are greatly appreciated and truly effective.

Leadership by an AMAZING board of directors. We had many decisions to make in a very short time frame. And the decisions were the easy part because each board member has contributed time, talent and other resources to put decisions in action so CEO became a reality for our future business leaders.

Talent and “Aha” Moments by our pioneer CEOs and Facilitator. They were trailblazers and risk takers for signing up for this brand new, unknown course called CEO in their senior year of school. Each CEO dug deep within themselves to meet expectations of their peers and to deliver on their visions for their businesses. There were tears, laughter, problem solving, reflection and loads of unleashed potential. Thank you to our Facilitator, Dr. Ryan Follis, for guiding them gracefully through their journey.

Innovation as our new families and students onboard with the CEO program and our board members continue to identify opportunities for improvement.

Let’s celebrate together and work to build our program even stronger in 2016-2017!
Thank you!

Heather Hampton+Knodle,
Chair





2015-2016 Class Mentors

Kurt Aumann (Aumann Auctions)
 Bill Bailey (Financial Services of America)
 Phill Borgic (Borgic Pork Partners, Ltd.)
 Patty Clark (First National Bank of Raymond)
 Nathan Clementz (Country Financial)
 Heather Hampton+Knodle (Knodle, Ltd.)
 Ed Heck (First National Bank of Nokomis)
 Dave Imler (Retired Management Consultant)
 Merle Imler (Computations)
 Kevin Neimann (First National Bank of Litchfield)
 Pollard, Lesley (Executive Director, Hillsboro COC)
 Holly Lemons (Circuit Clerk, Montgomery County)

Our Mission Statement

The Montgomery CEO program builds confidence and skills in our hardworking and trustworthy youth to empower them to create sustainable economic development and social prosperity in Montgomery County.

Facilitator's Feedback

The first year class of Montgomery CEO set the bar high for future classes. The young professionals learned from the wisdom of 34 speakers and toured 43 businesses. The class business grossed over \$20,000 and had a net profit over \$10,000. The trade show, arranged by the Board, was a highly successful event. More than 250 people attended and student businesses grossed approximately \$3,500 in sales.

The speakers and tours included many county-wide professionals and community leaders. During the first tour, Steve Dougherty shared the challenges of starting and operating a movie theater. In the spring, CEO revisited Mr. Dougherty, in his role as the Mayor of Litchfield, and toured the City of Litchfield offices. CEO tours covered a variety of businesses and professions such as; accounting offices, bakery, café, cattle farms, machining and manufacturing, seed factories, and a special trip to Osborn+Barr public relations firm in St. Louis. Speaker topics included marketing strategies, customer service, sales, financial planning, product development, and much more. Staff meetings (class time) also included visits to the county schools to share the CEO experience with future CEOs, planning and attending the networking event, the Hillsboro Chamber of Commerce breakfast, and joint meetings with the Board.

The Montgomery CEO Trade Show was held on April 26, 2016, where the new business owners presented their products and services to the community. Some students generated more revenue than anticipated while others became very aware of the challenges of starting a business and earning a profit.

Next year we will continue to build on the success of the first Montgomery CEO class with the support of the board, schools, mentors, Investors and Friends of CEO. There are many moments and accomplishments for everyone involved to celebrate the inaugural CEO Class. To quote our National Trade Show representative, Lucaas Secrist, "CEO is creating better people."

Dr. Ryan Follis,
Instructor





Picture taken by "James Ryan of NokoPhoto"

Group Business

Each year, the CEO class works together to create a class business. The class business is the first opportunity for hands on, applicable, entrepreneurial learning. The class must work together to start a profitable class business for which the proceeds will later be used as financial support for each individual business.

The students worked through almost a dozen ideas before deciding to hold a concert. Although a concert seemed like a fun and easy way to make money, CEO students quickly realized the amount of work that it takes to make an event successful and profitable! Students had to determine which band and musical style would be marketable and drive interest in this region. After the band was chosen, the students had to figure out an accommodating date and venue for the event as well as, a way of paying the band's deposit prior to event ticket sales. The class continued to work together to make the event profitable and fun for all!



"On behalf of Montgomery County CEO Class, we would like to deliver our sincerest thanks for supporting and attending our first, annual class business. We received \$9,200 in sponsorships and sold \$6,060 in concert ticket sales, including 554 bleachers and 260 floor tickets. 575 people were in attendance. Along with concessions and additional sales our gross income was \$19,014.82. Our expenses for the band, insurance, advertising, ticket manufacturing, concession purchases, various concert supplies, volunteer foods, staff t-shirts, and so forth amounted to \$9,816.69 making our net income app. \$9,198.13.

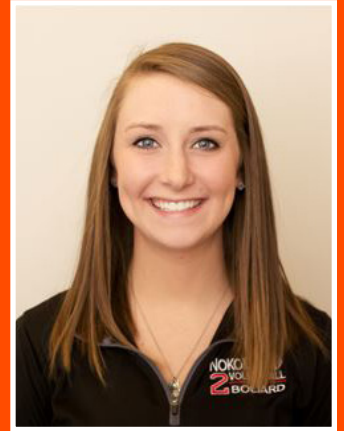
"This has been a remarkable feat for us, none of which would have been possible without the support of the Montgomery CEO Board, Investors and Friends, the Sponsors for the Concert, support from family and friends, and all those who attended the concert. There is no value that can be placed upon the experience we have gained through this endeavor. Thank you all!"

Sincerely, John T. Dirigo and fellow Montgomery CEOs

2015-2016 Montgomery CEO Class Members

Autumn Boliard: Nokomis High School

Autumn started a non-profit called ***Nokomis Jump Start Volleyball Camp***. The camp was a three day skills camp for elementary school girls entering third through fifth grade in the fall. It took place over the summer taught girls an introduction to passing, setting and hitting. With the help of Nokomis High School coaches, Megan Mehochko and Amy Stolte, the first two days included drill work while the last day included a fun tournament to showcase what the girls have learned. Profits made were donated back to the Nokomis Volleyball program and will be used to support the Nokomis Jump Start Volleyball Camp in the following years. This fall, Autumn will be attending Illinois State University to attain a degree in Actuarial Science.



Lucas Brookshire: Nokomis High School

Lucas is the owner of ***LB Farms*** in Fillmore. LB Farms is a layer poultry farm with approximately forty chickens. The chickens at LB Farms are cage free, where they are open to wander and feed which boosts the amount of nutrients in their diet. This makes better tasting eggs with dark yellow yolks. Lucas will be attending Southern Illinois University - Edwardsville next fall to study Mechanical Engineering.

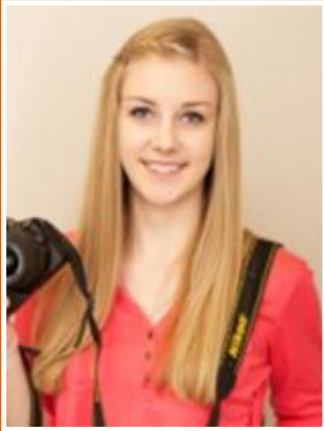


Kacie Cachera: Nokomis High School

Kacie enhanced her love for sewing through her personal business ***KC Kaboodles***. KC Kaboodles specializes in the creation of personalized infinity scarves, aprons, and other sewn goods. Customers may select fabric patterns and embroidery options from a large collection and know they are purchasing a one-of-a-kind product. KC Kaboodles' mission is to promote personality types in the community through their products. Kacie will be attending Eastern Illinois University in the fall, majoring in Hospitality Management and minoring in Business Administration.



2015-2016 Montgomery CEO Class Members



Kylie Carlyle: Hillsboro High School

Kylie is the owner of ***Kapture Dreams Photography*** and specializes in photographing classic cars. Growing up around a busy garage, filled with mechanics and dirty work, she has seen firsthand the long hours put into these classic cars. Kylie understands the pride owners have in their completed projects and makes it her mission to help them commemorate their accomplishment through high quality photographs and prints of their timeless investments. She is undecided of her future plans, but with the wide variety of people and professions she has met through her CEO experience she is excited about her future possibilities.



Karmyn Cox: Nokomis High School

Karmyn's business, ***Marks Made***, creates custom fingerprint jewelry. Using precious metal clay, Karmyn is able to capture fingerprints of loved ones and turn them into pendants for necklaces and charms for keychains and bracelets. These keepsake pieces of jewelry contain a lasting impression of a loved one that can be kept close at heart. Fingerprints of a child, grandparent, military service person, or spouse are just a few examples of clientele. Karmyn has even seized the imprint of a pet's nose and turned it into wearable art. In the fall, Karmyn will be continuing Marks Made, while attending Southern Illinois University - Edwardsville to pursue a Master's degree in Speech and Language Pathology.



John Dirigo: Hillsboro High School

John is the owner and creator of ***Fitness Distributed***. The goal of his company is to increase the health and wellness in the local community through the use of motivational and fitness ranked dryfit shirts and merchandise. His ranked shirts demand a certain level of physical aptitude to obtain them, ranging from beginners to the elite. John will be attending Lindenwood University to study History and Political Science.

2015-2016 Montgomery CEO Class Members

Hannah Dudek: Homeschooled

As creator of ***Medalworks***, Hannah provides custom jewelry and charms using recycled metals. Each piece is melted and casted hand to the customer's preference. Due to the unique way of manufacturing these pieces, Hannah is able to cast almost any design. Hannah plans on attending Lincoln Land Community College to pursue a degree in Psychology.



Lexi Emerson: Lincolnwood High School

Lexi is the proud owner of ***Music Box***. Music Box helps people buy and sell musical products, provides musical lessons and care and maintenance of instruments at an affordable price. Music Box is currently an online based business in Montgomery County. Lexi states that the CEO program has taught her the importance of best business practices and giving back to the community. She will be attending Illinois College and majoring in Music Education in order to teach professional lessons and improve her ongoing business.



JoAnna Marley: Nokomis High School

JoAnna is the owner of ***Capital A Creations***, a graphic design business that specializes in logo, t-shirt, business card, invitation design and more. She always strives to meet every customer's needs in the friendliest of ways -- after all, Capital A Creations is your friend in design! She also has a Christian T-Shirt line called The Script by Capital A Creations. JoAnna plans to attend Southern Illinois University at Edwardsville to major in Exercise Science with a specialization in Occupational Therapy while continuing and expanding her business.



2015-2016 Montgomery CEO Class Members



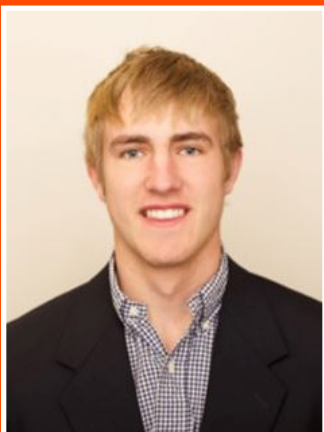
Abby Meyer: Hillsboro High School

Attic Creations, by Abby, is a family owned business specializing in custom-made home decor and gifts for those who want to make their homes a more personalized environment. In addition to offering unique products, unparalleled customer service and quality, value completes the customer experience. In her future, Abby Meyer plans to attend Stevens-Institute of Business and Arts and obtain a degree in fashion merchandising and business.



Abbi Ruppert: Nokomis High School

Abbi's business, ***Rove Recycling***, provides a more convenient method of recycling for Nokomis community members. Rove Recycling goes directly to resident homes and businesses to pick up recyclables and take them to the center. This simplifies recycling in order to make caring for the Earth effortless, easy, clean, and affordable. Abbi plans to attend Southern Illinois University Edwardsville in the fall to study studio art and applied communications.



Dominic Ruppert: Nokomis High School

Dominic started his business with his father, Chad Ruppert. Together they breed fundamental and ethical satellite beef herd. An Iowa Beef Hoop system barn is in the process of being built and will have 110 recipient cows in production. Dominic has been raising cattle since a young age and knows what it takes to have a calf ready to roll in the first few months in the calf's life. Dominic will be attending Lincoln Land Community College on a livestock judging scholarship and to study Agri-Business Management.

2015-2016 Montgomery CEO Class Members

Lucaas Secrist: Hillsboro High School

Through CEO Lucas founded ***Nana's Warm and Cozies***. The Cozie is a two pouch, customizable, microwavable heating pad perfect for sore joints, bad backs and cold nights. Nana's Warm and Cozies is a family owned business centered around helping customers with pain relief and maximizing comfort for those they serve. After high school he plans on attending MacMurray for business management and leadership.



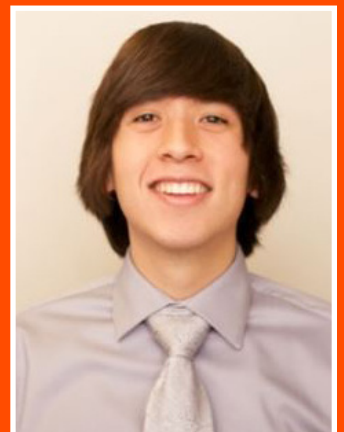
Chris Storm: Hillsboro High School

Chris is the founder of ***Eterna-Care***, a gravesite maintenance service. Located and servicing the Montgomery County region, Chris will help families who have loved ones buried in the surrounding areas whose graves need cared for. Services at Eterna-Care include stone cleaning and maintenance, flower placement and enhanced grave plot care. Next fall Chris plans on attending the University of Illinois at Springfield.



Steven Weller: Hillsboro High School

Steven is the sole owner and operator of ***Black Diamond Detailing***. His services include full vehicle details with waxes and washes for vehicles that are driven every day. Steven has several years of detailing experience and his business delivers a high-quality, high-value service to Hillsboro and the surrounding area. Next fall Steven will be attending Lincoln Land Community College for Business Administration.



CEO business Partner Investors are the heart of CEO. Their annual investment of \$1,000 provides the necessary resources for the current year's facilitator's salary and other expenses while ensuring the sustainability of the CEO class for future students. Business Partner Investor Commitments of time and energy are also critical to the success of CEO. Thank you to those businesses and individuals who have supported Montgomery CEO!

CEO Class Business Partner Investors

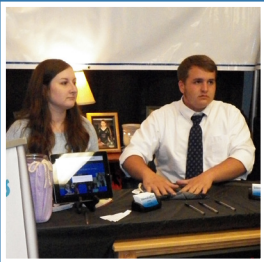
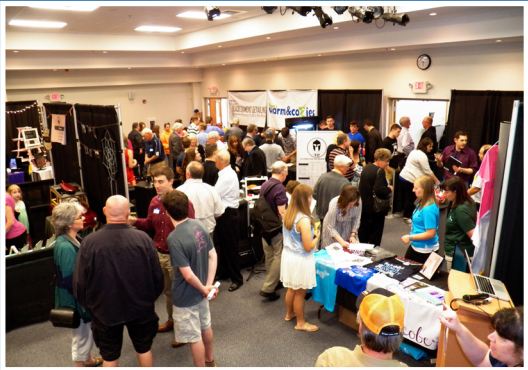
- All Precision Manufacturing
- Ameriprise Financial
- Aumann Auctions
- Bank and Trust Company
- Betzold Farms
- Borgic Pork Partners, Ltd.
- Brandt Consolidated
- Computations
- Country Financial-Nate Clementz, Jim Beeler
- Doctors Barbara and Robert Mulch
- Dr. Patricia Whitworth
- Family Farms Group
- Farmers Mutual Insurance
- Financial Services of America
- First Community Bank of Hillsboro
- First National Bank of Litchfield
- First National Bank of Nokomis
- First National Bank of Raymond
- Foresight Energy Services LLC
- GetTucker
- Hayes Abrasives
- Hillsboro Area Hospital
- Hillsboro Chamber of Commerce
- Hurst-Rosche Engineers
- Kerber, Eck and Braeckel LLP
- Knodle, Ltd.
- Litchfield National Bank
- Litchfield Rotary
- MLH Futures
- Montgomery CEO Class of 2016
- Montgomery County Farm Bureau
- Montgomery County Realty
- National Bank
- Niemann Grain Farms Inc
- Nokomis Savings Bank
- Patton and Company PC
- Pioneer Dealer/ Steve Janssen
- Precise Specialties Corporation
- Security National Bank
- St. Francis Hospital
- Stiehl-Dawson Funeral Home
- Sullivan Drugs
- The Journal News
- Vogel Plumbing, Inc.
- MJM Electric Cooperative, Inc.
- Weitekamp Electric
- Westside Cinema
- White and Associates
- Worksaver
- Wright Automotive
- Montgomery County Board (Investor & Partner)
- Montgomery County Economic Development Corporation (Investor & Partner)

Friends of CEO

- Matt & Valerie Belusko
- Country Financial
- Patty Clarke
- E and A Computer Services
- Farmer's Oil
- Fleming Tawfall
- Hillsboro Rotary
- Hillsboro Sertoma Service Organization
- McDonough-Whitlow PC
- Panhandle Area IL Federation of Business Women
- Paris Frozen Foods, Inc.
- State Farm Insurance
- Walch Electric

CEO Student Trade Show

On Tuesday April 26th the CEO Students held the Montgomery CEO Trade Show giving them the opportunity to showcase their hard work. Students sold items and/or services from their personal businesses to approximately 250 attendees at the Lincoln Land Auditorium, in Litchfield. Community members, business leaders, educators, parents and interested students attended the event and purchased over \$3,848 in services and goods.

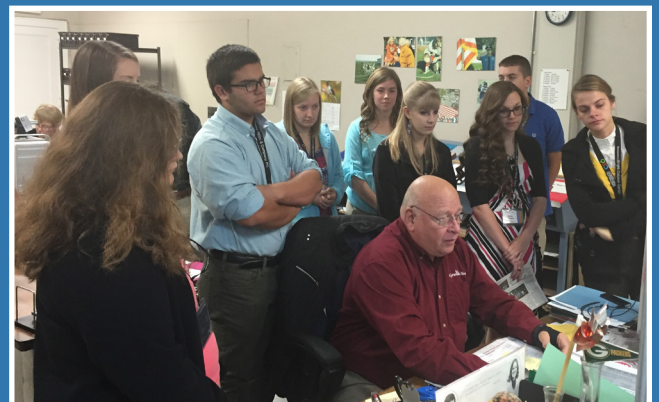




Guest Speakers and Business Tours

Ace Hardware (Kristel White)
 All Precisions Manufacturing (Jeff Howell)
 Aumann Auctions (Kurt Aumann)
 Adams and Roberts, PC (Barbara Adams, Attorney at Law)
 Betzold Farms (Bruce Betzold)
 Borgic Pork Partners, LTD (Phil Borgic)
 Chelsea Lapolice Photography (Chelsea Lapolice)
 Computations (Merle Imler)
 Dreams Coffee Shop (Jill Carroll)
 Erik Hyam, attorney at law
 Ethan Cross (Aaron Brown) International Best-Selling Author
 Farmers Oil (Steve Cachera)
 Financial Services of America (Bill Bailey)
 Fleming-Tawfall & Co. P.C (Brenda Masters-Stout)
 Get Tucker! (Tucker Aumann)
 Trendz (Andrea Ruppert)
 Hayes Abrasives (David Hayes)
 Hillsboro Area Hospital & Fusion (Rex Brown and Jessica Chappellear)
 IL Fire Service Institute (Joe Gasparich)
 C&B Bank and Trust, N.A. (Jordan Ruppert)
 Karen Wolters (Entrepreneur, Inventor of Contigo Coffee Mugs)
 Knodle Ltd. (Heather Hampton+Knodle)
 Litchfield Bank and Trust (Andre Narcaxe, John Martin and Dan Fleming)

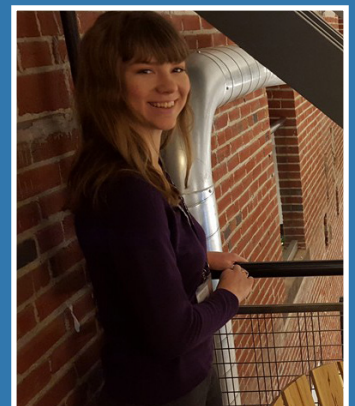
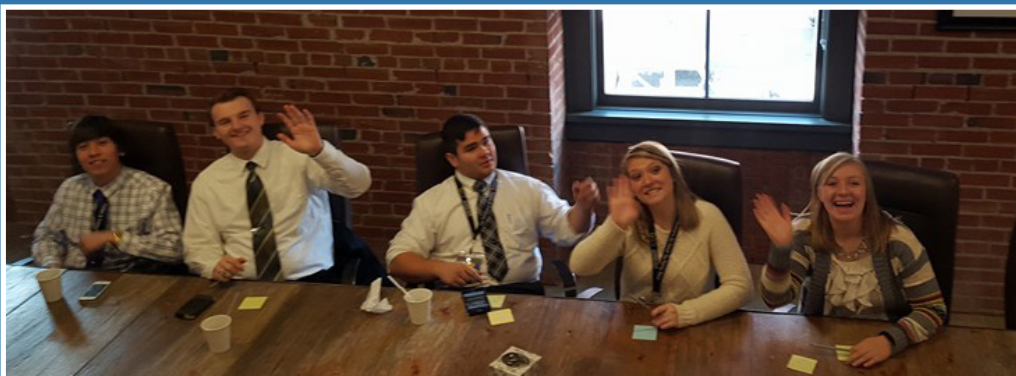
Litchfield City Hall (Mayor Steve Dougherty)
 Litchfield Rt 16 Grain Elevator (Spencer Jansen)
 Little Italy (Mike Moreland, Owner, and Leanne Hampton, Manager)
 Mary Kay (Mary Herschelman)
 Merle Imler and Dave Imler
 Montgomery County (Sandy Leitheiser and Holly Lemons)
 Montgomery Economic Development Corporation (Will Shalter)
 National Bank in Hillsboro (Misty Borrowman, Sheila White and Harry Hutchinson)
 Nokomis School District (Dr. Doerr, Superintendent)
 Paris Foods (Russell Rhodes & Allen Hopper)
 Patton and Company PC (Linda Patton)
 Pioneer Seed Co. in Litchfield (Tony Herman and Tom Fergin)
 Ruppert Land and Livestock (Dominic Ruppert)
 Scheller Insurance (Tom Franzen)
 Schutt Factory and Distribution (Clint Lemons)
 Security National Bank (Rob Williams and Jim Miller)
 Stiehl-Dawson Funeral Home (Marty Dawson)
 The Journal News (John Galer)
 Threads Upscale Resale (Michelle Turner)
 Top Tier Cakes (Page Meyers)
 True Colors (Susan Hanfland)
 Westside Cinema (Steve Dougherty)
 WSMI (Terry Todt)





CEO Tours Osborn+Barr in St. Louis

Montgomery CEO Chairman Heather Hampton+Knodle set up a tour for Montgomery CEO to Osborn+Barr in St. Louis, "Osborn+Barr is a P.R. firm that uses their decades of experience with Fortune 500s and small to mid-range businesses to focus on 'all things rural' across the United States." Special thanks to Cheryl Mitchell, the new CEO of Midland State, Rex Brown, Roseanne Heck, and Heather for joining us on a great adventure!



Student Support and Awards

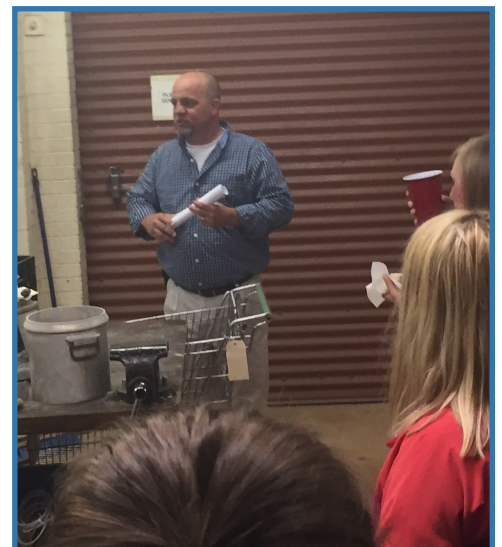
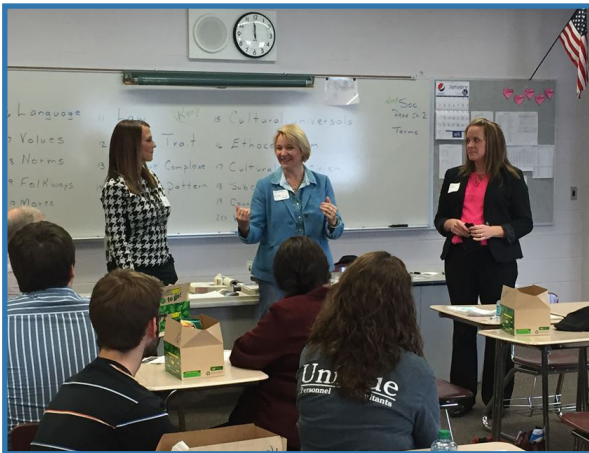
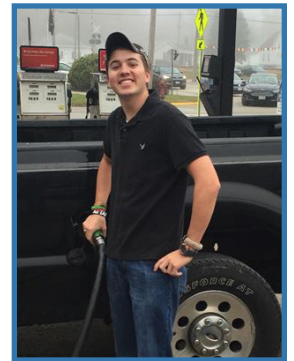
Friends of CEO made Awards possible.

Most Deserving CEO

This award was presented by the class based on their abilities, contribution in the class business and potential for being in business five years from now. Joanna Marley was voted "Most Deserving CEO" by her peers.

Entrepreneurial Spirit Award

To receive this award, interested CEOs submitted an application containing their business plan and an explanation of how the award would be used. In addition, the CEOs defended their applications in interviews with Board Members. Recipients included: Kacie Cachera of KC Kaboodles; Joanna Marley of Captial "A" Creations and Lucaas Secrist of Nana's Warm and Cozies.



CEO Advisory Board 2015-2016

Heather Hampton+Knodle, Chairman (Knodle, Ltd.)
Jeffrey Howell, Vice Chairman (All Precision Manufacturing)
Amy Patton, Co-Secretary (Patton & Company PC)
Merle Imler, Co-Secretary (Computations)
Misty Borrowman, Treasurer (National Bank)
Valerie Belusko, Reporter (Litchfield National Bank)
Adam Anderson, (Montgomery County Farm Bureau)
Kurt Aumann (Aumann Auctions)
Phil Borgic (Borgic Pork Partners, Ltd.)
Rex Brown (Hillsboro Area Hospital)
Marchelle Kassebaum (Christian-Montgomery ROE)
Kendal Elvidge (Lincolnwood High School)
Doug Hoster (Litchfield High School)
Lacy Glenn (Nokomis Jr/Sr High School)
David Powell (Hillsboro Community School District No. 3)



A Special Thanks to our Class Hosts



Pledge Card - If you are interested in supporting the Montgomery CEO Class by becoming a Business Partner Investor, please use the form below. Thank you!

Business Contact: _____ Title: _____

Business Name: _____

Business Name (for recognition & marketing): _____

Address: _____ City: _____ State: _____ Zip: _____

Phone: _____ E-mail: _____

By checking below, I wish to financially support the Montgomery County CEO project by becoming an Investor or Friend of CEO:

_____ \$3,000 total—paid \$1,000 per year over a three-year period

_____ \$3,000 paid in full

\$_____ Friend of CEO _____ Please check here if you wish to be invoiced.

Signature _____



Montgomery CEO is a program to develop young people's professional and workplace skills in Montgomery County, Illinois. All donations to the Montgomery CEO Program are tax deductible charitable gifts to the Montgomery County Economic Development Corporation, a 501(c)3 not-for-profit organization dedicated to building a brighter future for Montgomery County, Illinois. Please mail your donation to the Montgomery CEO Program bookkeeper:
Jeff Eickhoff-CEO Program, White & Associates, P.O. Box 494, Hillsboro, IL 62049.

PLEDGE CARD

For more information on the Montgomery CEO program contact:

www.montgomeryceo.com

Heather Hampton+Knodle, Chair
Montgomery CEO Advisory Board
217-538-2171
Progress2050@royell.org

Ryan Follis, Instructor
Montgomery CEO Class
217-556-6620
rfyanfollis@gmail.com